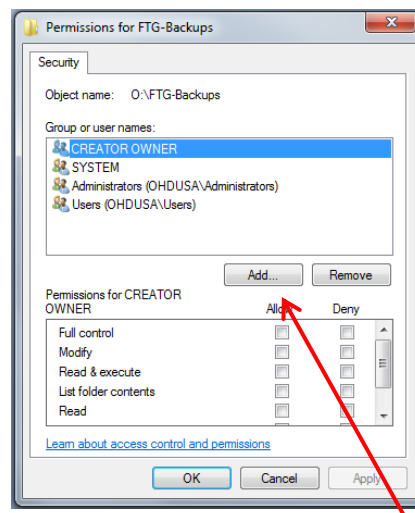
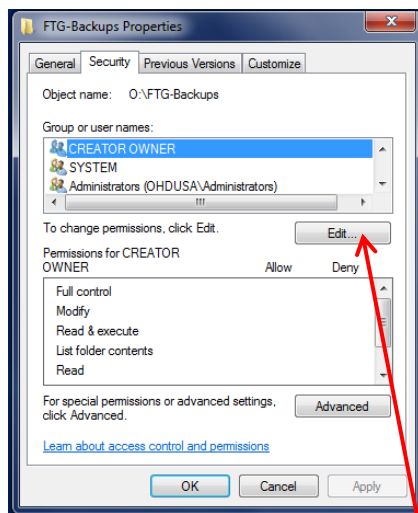


These instructions are for FitTrack Gold versions 2.0.X.X

Problem: Browsing to a server for backup location creates error when backup initiated.

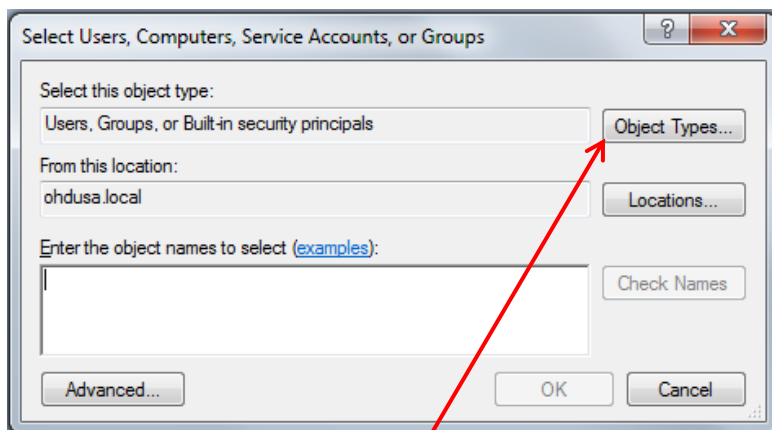
Solution: Create a folder on the server and give permissions based on these settings.

1. On the server, create a new folder or select an existing one.
2. Right click on the folder and select **PROPERTIES**.
3. Under Properties select **Security**



4. At the security screen select **EDIT**:

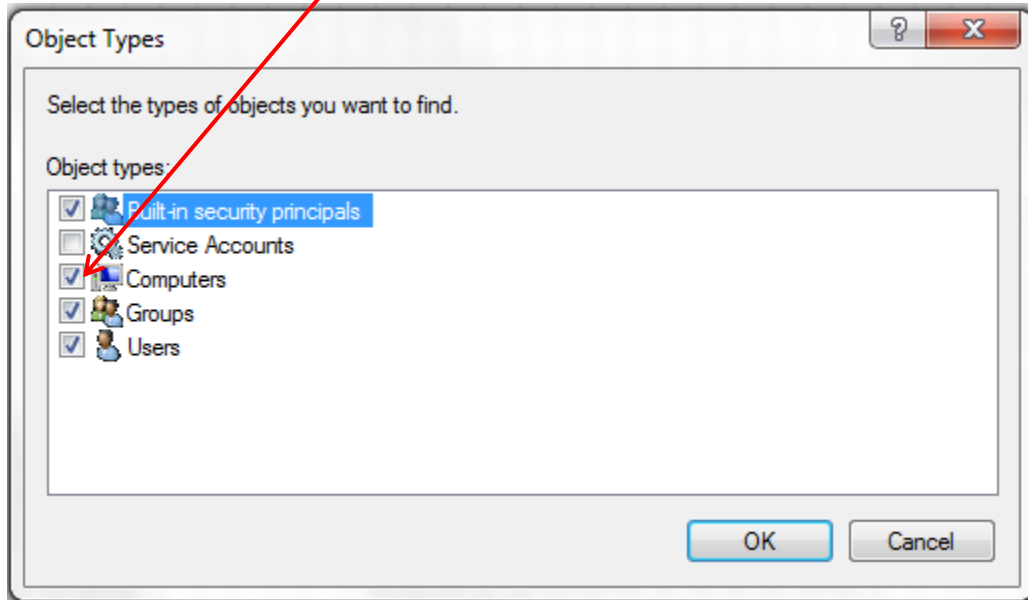
5. At this screen click on **ADD**



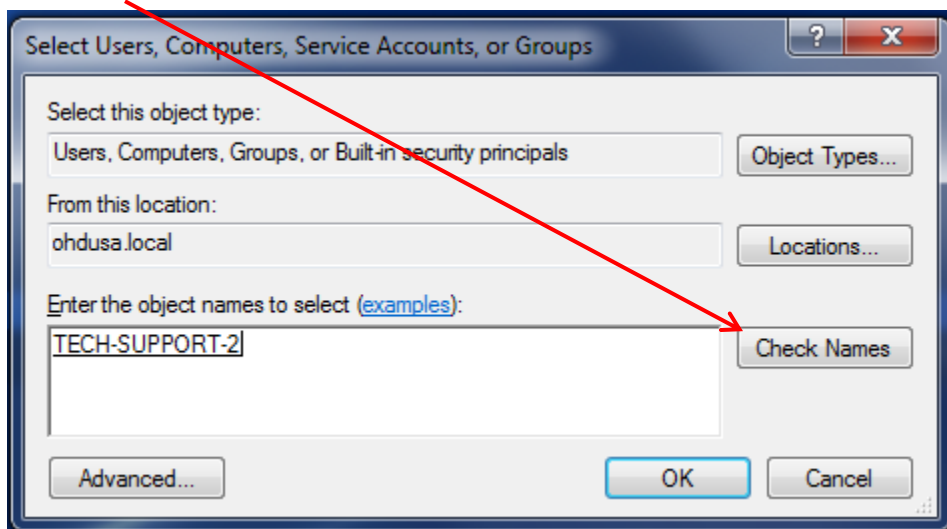
6. On this screen select "Object Types"

## Configuration for Backing up to a Server

- Place a check mark on **COMPUTERS** and click **OK**



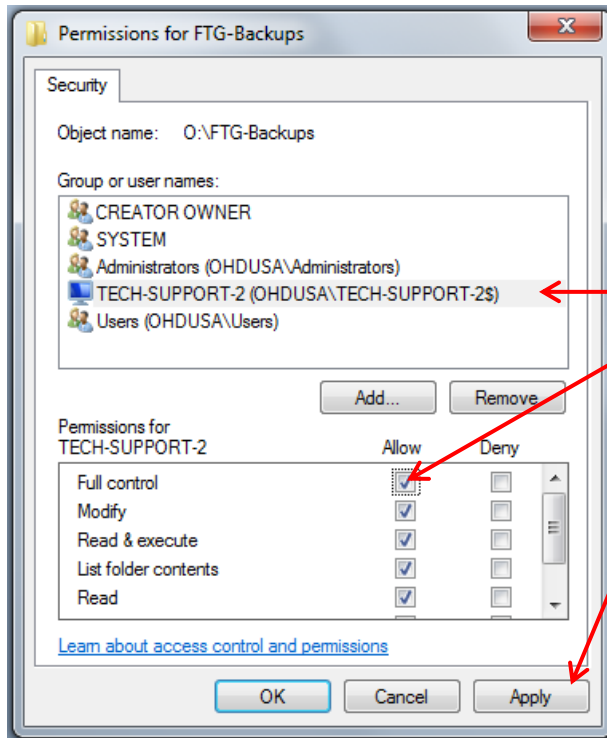
- On this screen **type in the name of your computer** and let the system search for it by clicking on **CHECK NAMES**



When it finds your computer name click **OK**

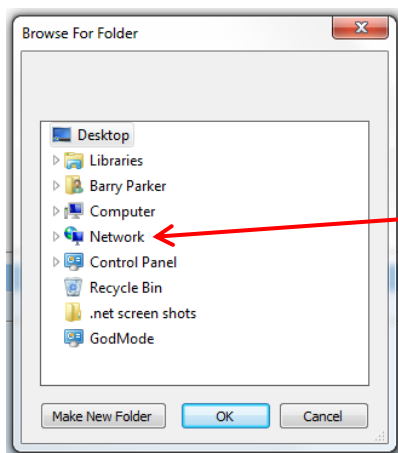
## Configuration for Backing up to a Server

- This will take you back to the security screen and you will see your PC listed in the Users.
- Select your computer and place a check mark in the **ALLOW** (full control) column and then click on **APPLY** then **OK**.

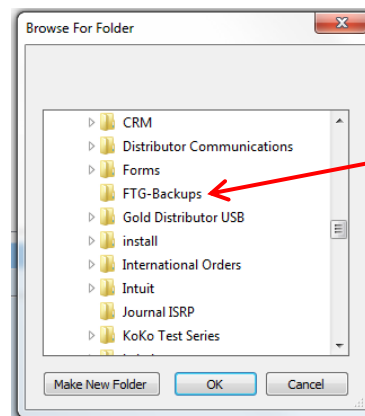


### Clear out of all screens and return to FitTrack Gold.

- From the **TOOLS** menu select **Backup** and then **Browse**.
- From the list of folders and directories select **NETWORK**.

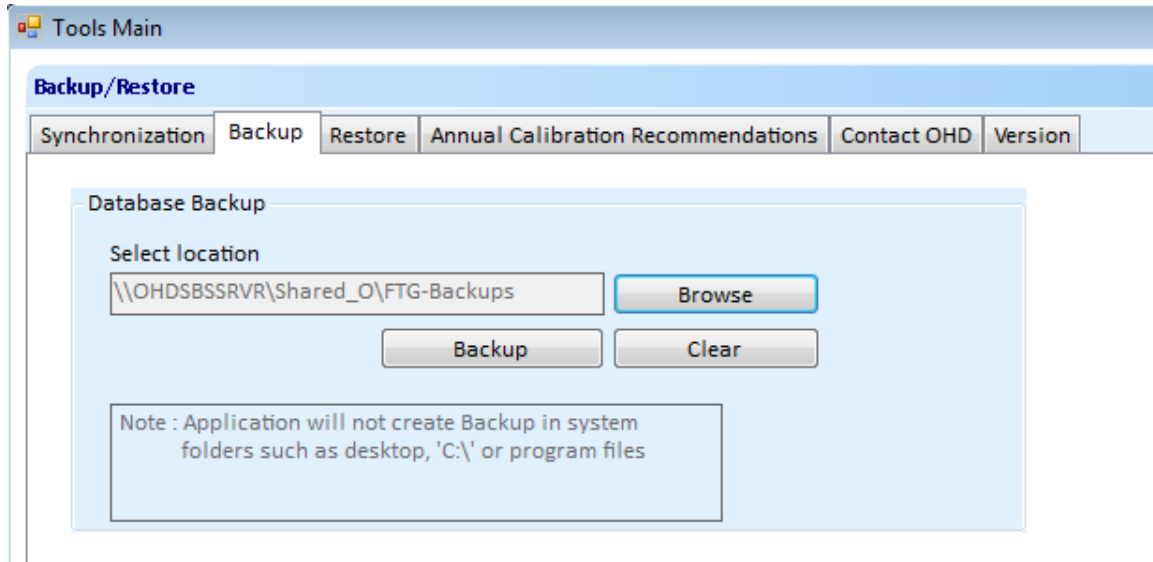


Look for the Server name where you created the folder



Continue opening the lists and find the folder you created, select it and click OK

Your FitTrack Gold Screen should look something like this:



Click on Backup and “Yes” and then START.

