

## Changing the COMPATIBILITY Settings for Windows 7 & 8

**Versions affected:** 3:0.1 and 5.0.1 running on Windows 7 or Windows 8

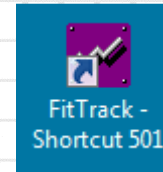
**WARNING:** You must run this step if you are using version 3.0.1 or 5.0.1 of FitTrack. Failure to change this setting will result in data being lost.

### **Problem:**

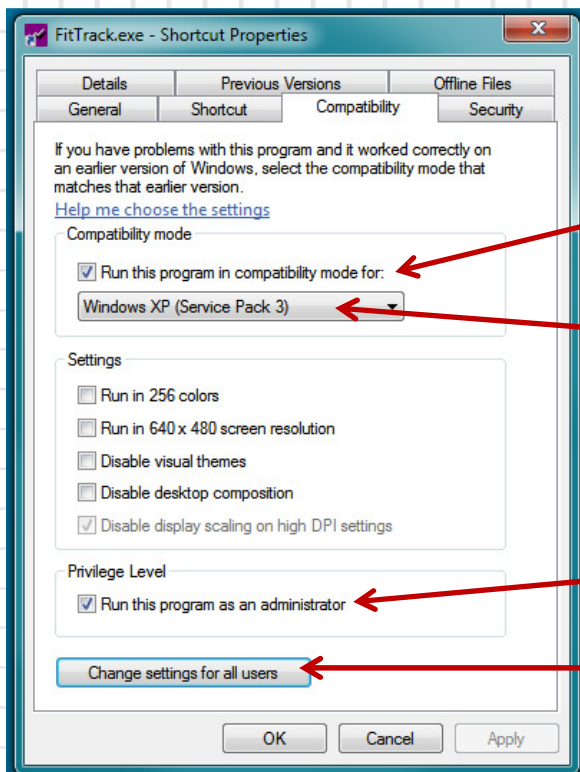
All data lost after software shut down.

### **Solution:**

Change **COMPATIBILITY** settings for FitTrack software



From the desktop right click on the FitTrack shortcut and select **PROPERTIES**



From the **PROPERTIES** window select the **COMPATIBILITY** tab

Put a check mark in the “..compatibility mode...” box

Select **Windows XP Service Pack 3** in the drop down window.

Put a check in “Run as administrator”

If the PC has multiple log-in options, then make the same changes under the “**Change settings for all users**” button